



Bower Place, Maidstone, Kent, ME16 8BH

Guide Price £550,000

When experience counts...

est. 1828
bracketts

**** ATTENTION ALL INVESTORS ** 5.8% RENTAL YIELD**

Offered for sale is this detached period home situated in the heart of Maidstone. The property is Currently rented out as four double bedrooms and with a two-bedroom self-contained annex, this is ideal for any Landlord. Situated very close and within walking distance to both Maidstone Town Centre and Maidstone West Station this is the perfect location. As you approach this Victorian detached house there is a large driveway for several cars. Internally there are original fireplaces and features, yet the whole building has been decorated to a modern standard, in particular the kitchen. The main house comprises a 23ft lounge/diner, kitchen, four double bedrooms, a main bathroom and a further WC. The ground floor annex has two bedrooms, an en-suite, kitchen and lounge/diner. Externally there is an established low maintenance rear garden. Offered for sale with no onward chain.

HMO Property

Four Extra Double Bedrooms

Two Bed Self Contained Annex

Walking Distance To Train Station

Original Features Yet Modern
Decor

Detached Victorian House

Walking Distance To Town Centre

Off road Parking For Several Cars

No Onward Chain

5.8% Rental Yield – Figures Upon
Request





LOCATION: Maidstone

Bower Place is situated in an excellent location within a 0.5 mile walk of Maidstone West train station and the High Street, with its wide range of shops, bars and restaurants.

Maidstone is the county town of Kent and is perfectly situated in the heart of the county for easy access to London, the Kent coast, and beautiful countryside. It is a great place to live with leisure, shopping and entertainment all on the doorstep. It boasts excellent schools and good road and rail links.

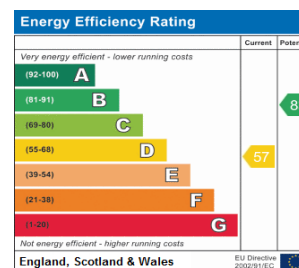
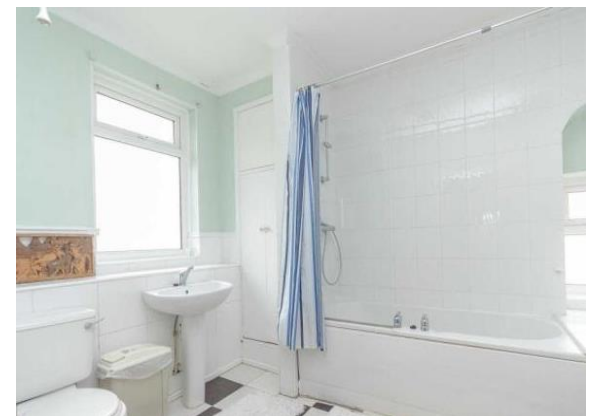
London is just an hour commute away while Ashford is 30 minutes. The town is ranked in the top five shopping centres in the south east and offers a wide range of leisure activities for all the family from canoeing and boating on the River Medway, great dining, a multiplex cinema, the Hazlitt Theatre, clubs and music venues in town, treasures at the Maidstone Museum and history at Leeds Castle

ADDITIONAL INFORMATION:

The upstairs (ground floor and first floor) is now a Band C.

The basement flat has been rated as a Band B

Double Glazed Windows



Important Notice: Bracketts, their clients and any joint agents give notice that they have no authority to make or give any representations or warranties in relation to the property. These particulars do not form part of any offer or contract and must not be relied upon as statements or representations of fact. The text, photographs and plans are for guidance only and are not necessarily comprehensive. All areas, measurements or distances are approximate and no responsibility is taken for any error, omission or mis-statement. It should not be assumed that the property has necessary planning, building regulation or other consents and Bracketts have not tested any services, appliances, equipment or facilities. Purchasers must satisfy themselves by inspection or otherwise. Prices, rents or any other charges are exclusive of VAT unless stated to the contrary.



Basement



Ground Floor



First Floor

Total floor area 176.0 sq. m. (1,894 sq. ft.) approx

This plan is for illustration purposes only and may not be representative of the property. Plan not to scale.

Powered by audioagent.com